

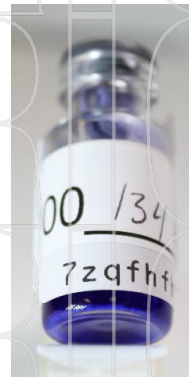
Finnrick Analytics
 Finnrick.com
 Austin, TX



Project 145009
Lab # 200134
Date Rec'd 1/16/2026
Report Issued 2/9/2026

Compound GHK-Cu **Label Claim** 100 mg **Batch/Lot** 7zqfhf

Certificate of Analysis



Analyte

Peptide Analysis

Chromatographic purity

GHK-Cu

GHK-Cu

<u>Result</u>	<u>Units</u>	<u>LOQ</u>	<u>% of Label</u>	<u>Method</u>	<u>Date</u>	<u>CAS</u>
>99.9	%	0.5		HPLC-UV/MS	2/3/2026	
113	mg	0.5	112.8	HPLC-UV-MS	2/3/2026	49557-75-7
ID Confirmed				HPLC-UV-MS	2/3/2026	

Safer.

The data presented are from the analysis of the sample shown and meet Krause Analytical internal quality assurance criteria unless otherwise flagged. Methods shown reference current Krause Analytical SOPs
 ND - Not detected LOQ - limit of quantification
 Copyright © 2026 Krause Analytical LLC. All rights reserved.

Respectfully submitted,

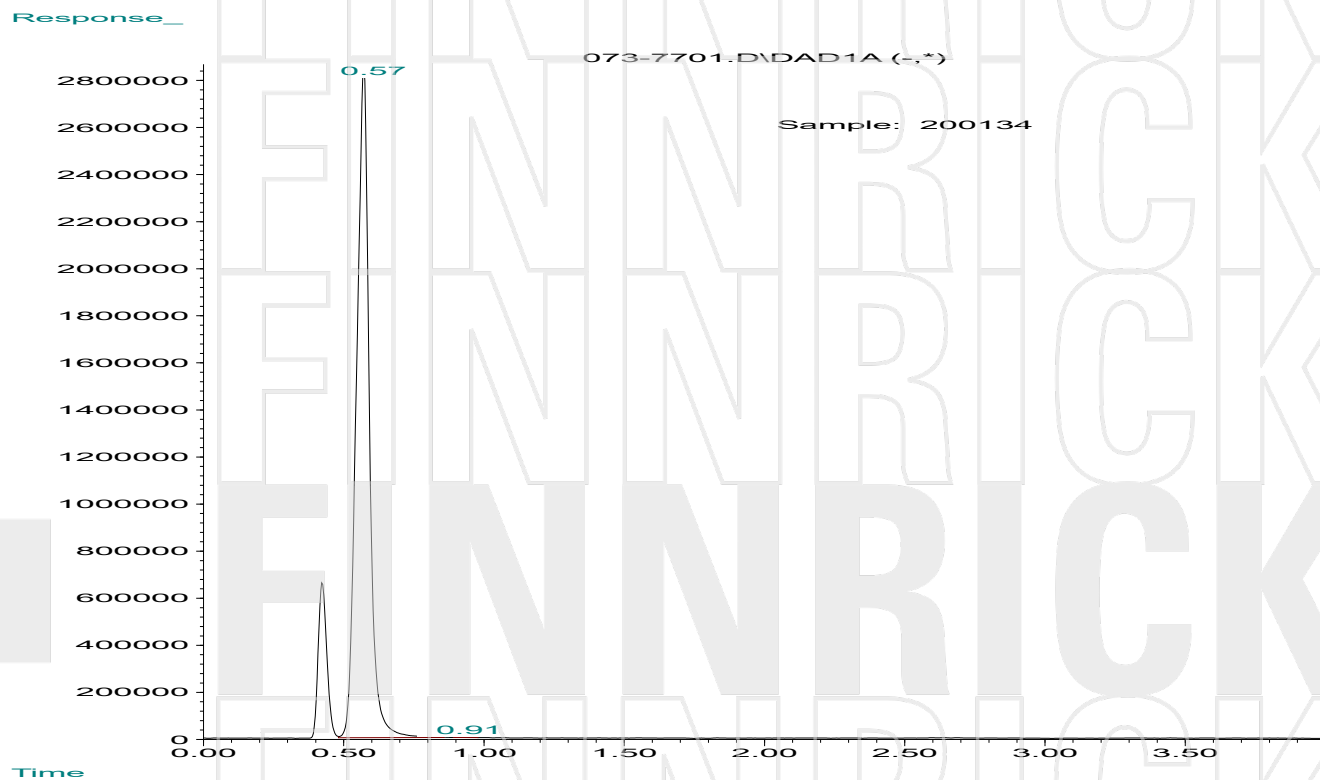
Mark C. Krause
 Laboratory Director

8127 Mesa Drive Suite B-206 Austin, TX 78759

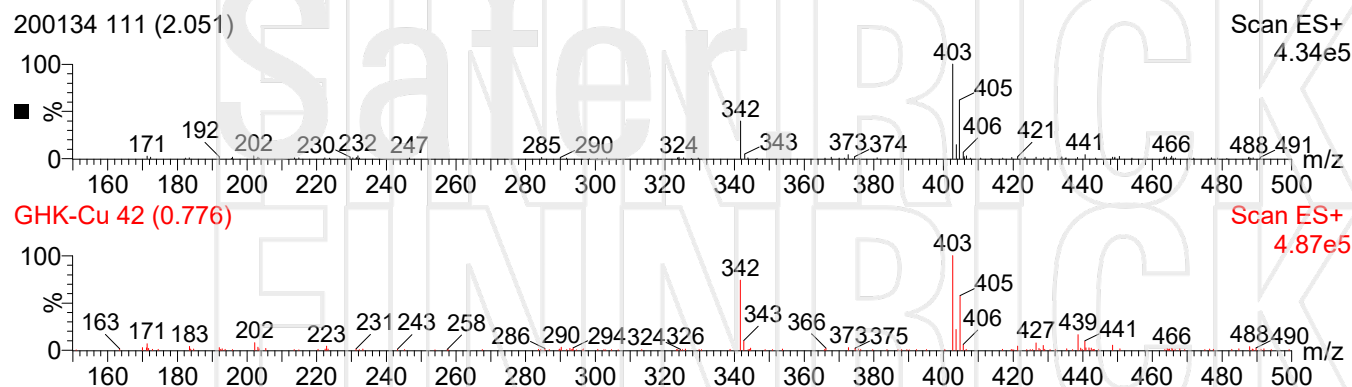


krause analytical

Chromatogram



Mass spectrum/Reference Spectrum



Krause Analytical, LLC 8127 Mesa Drive Suite B-206 Austin, TX 78759